



SAXON SHORE
— ESTATE AGENTS —



28 Breeze Meadow, Faversham, ME13 7FZ **Offers in excess of £350,000**

Introducing this immaculate, four bedroom, semi detached house on a popular estate in the Bysing Wood area of Faversham. Located close to local amenities and public transport links, and just a short drive away from the town centre and train station. Brought to market chain free!

Accommodation spans across three floors, the layout is thoughtfully designed with modern convenience in mind, to maximise space and light. The ground floor comprises a bedroom/study, spacious kitchen diner with integrated appliances and french doors that open onto the garden, and a utility room.

Upstairs on the first floor is a well proportioned lounge, a double bedroom with built in storage and a full bathroom.

On the second floor are two further, good sized double bedrooms, one of which has an ensuite shower room and fitted wardrobes.

Entrance Hall



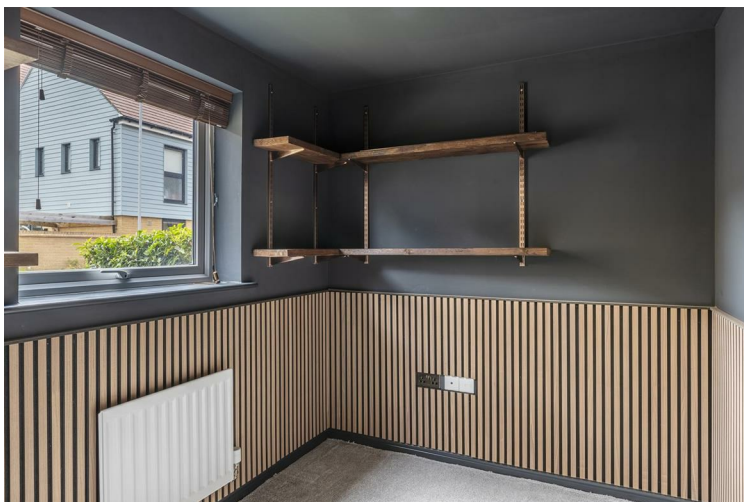
Kitchen/Dining Room
15'5" x 14'4" (4.72 x 4.37)



Utility Room
7'10" x 5'5" (2.4 x 1.67)



Bedroom 4/Study
8'7" x 6'11" (2.64 x 2.11)



Landing



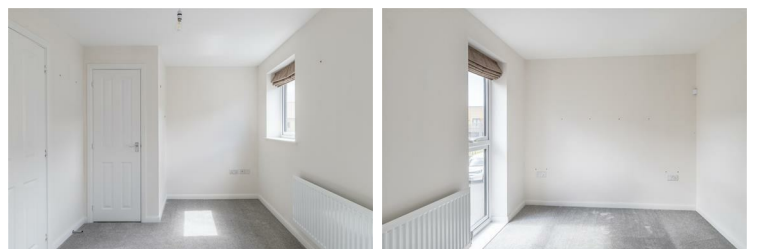
Living Room
15'5" x 11'5" (4.72 x 3.5)



Bathroom
6'3" x 7'0" (1.91 x 2.14)



Bedroom 3
15'5" x 8'3" (4.72 x 2.52)



Landing

Allocated Parking Spaces



Bedroom 1
15'5" x 11'5" (4.72 x 3.5)



Ensuite
6'3" x 7'0" (1.91 x 2.14)



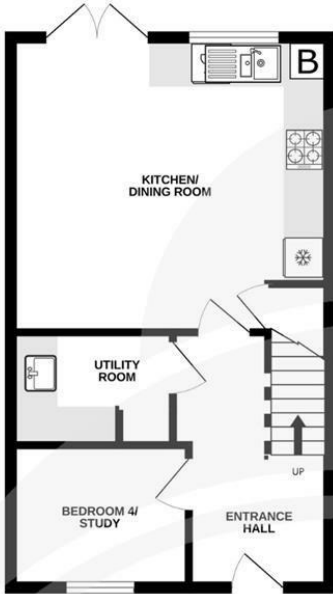
Bedroom 2
15'5" x 8'3" (4.72 x 2.52)



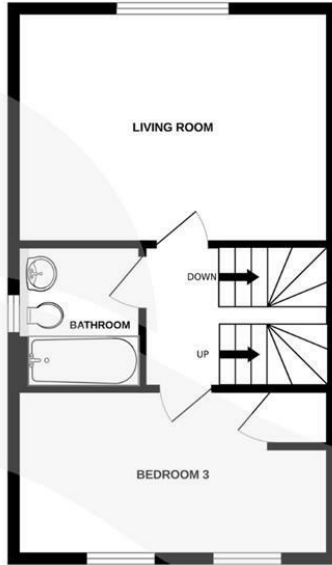
Garden



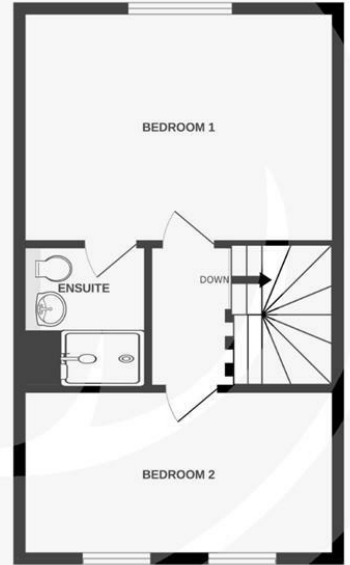
GROUND FLOOR
38.5 sq.m. (414 sq.ft.) approx.



1ST FLOOR
38.3 sq.m. (412 sq.ft.) approx.



2ND FLOOR
38.0 sq.m. (409 sq.ft.) approx.



TOTAL FLOOR AREA: 114.7 sq.m. (1235 sq.ft.) approx.

Whilst every attempt has been made to ensure the accuracy of the floorplan contained here, measurements of doors, windows, rooms and any other items are approximate and no responsibility is taken for any error, omission or mis-statement. This plan is for illustrative purposes only and should be used as such by any prospective purchaser. The services, systems and appliances shown have not been tested and no guarantee as to their operability or efficiency can be given.
Made with Metropix ©2025

